

MONTHLY MEMBERSHIP PROGRESS REPORT

LOCATION INDIA

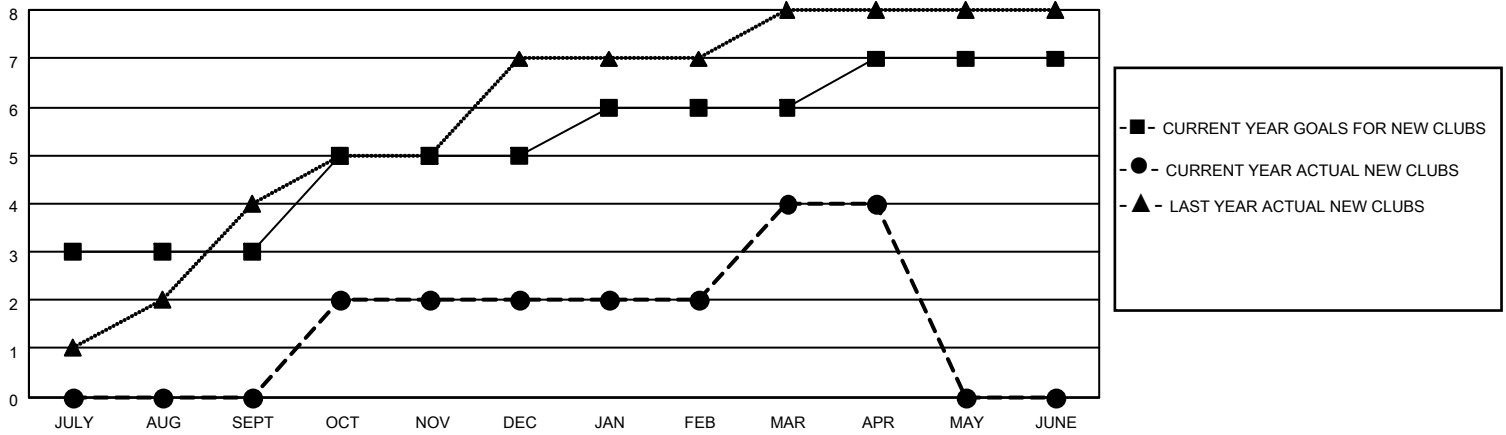
District 320 E

Results as of: 4/30/2022

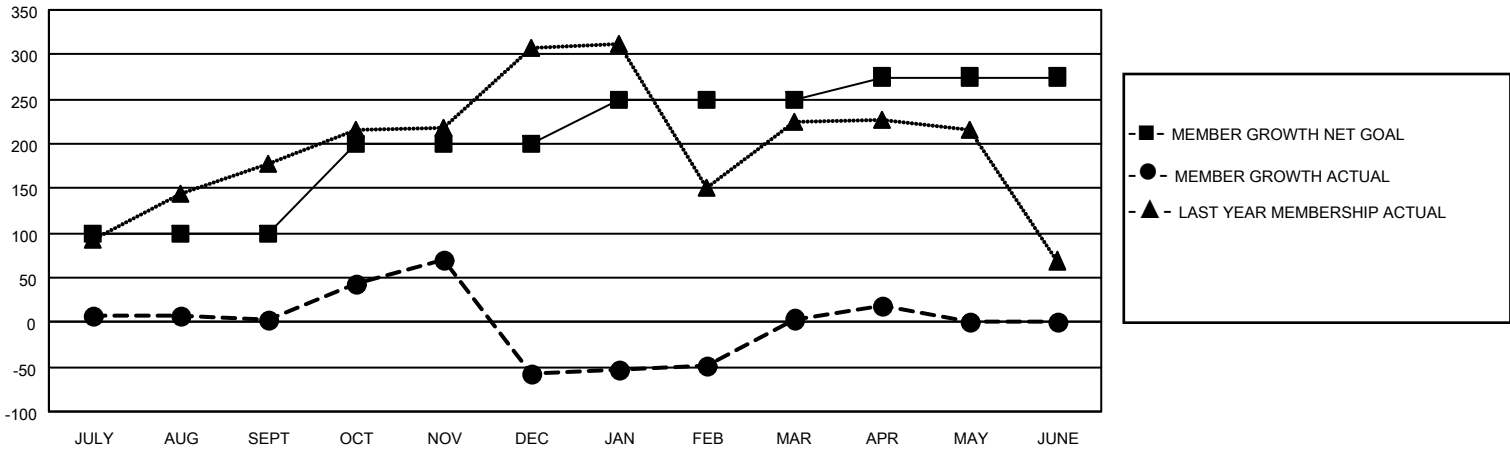
Clubs			
RESULTS FOR 2021-2022			
QUARTER	NEW CLUB GOAL	NEW CLUBS	DROPPED CLUBS
JULY/AUG/SEPT	3	0	1
OCT/NOV/DEC	2	2	6
JAN/FEB/MAR	1	2	0
APR/MAY/JUNE	1	0	0

Members			
RESULTS FOR 2021-2022			
QUARTER	MEMBER GROWTH NET GOAL	MEMBER GROWTH ACTUAL	DROPPED MEMBERS ACTUAL (including transfers)
JULY/AUG/SEPT	100	125	111
OCT/NOV/DEC	100	107	165
JAN/FEB/MAR	50	70	5
APR/MAY/JUNE	25	20	2

GOALS AND ACTUAL NEW CLUBS CUMULATIVE



GOALS AND ACTUAL MEMBERS CUMULATIVE



DROPPED CLUBS: 7

33 CLUBS OF 71 ADDED 1 OR MORE NEW MEMBERS

GENDER DISTRIBUTION

DROPPED MEMBERS

DECEASED	8
CLUB CANCELLED	75
OTHER	200
TOTAL	283

[CLICK HERE FOR CUMULATIVE MEMBERSHIP DATA](#)

MALE	2,108 (70.43%)
FEMALE	885 (29.57%)
NON BINARY	0 (0.00%)
PREFER NOT TO ANSWER	0 (0.00%)

TOTAL FAMILY UNIT MEMBERS 2,134

FAMILY MEMBERS PAYING HALF DUES 1,316